



---

# Standardized Tests for International Student Admissions

Aylin Ünalđı

Boğaziçi University



## Standardized Tests for International Student Admissions

---



Boğaziçi University

79 post-graduate programs offered by

Institute for Graduate Studies in Social Sciences

Institute of Environmental Sciences

Institute for Graduate Studies in Sciences and Engineering

Institute of Biomedical Engineering

Kandilli Observatory and Earthquake Research Institute

Atatürk Institute for Modern Turkish History

## CRITERIA

GPA

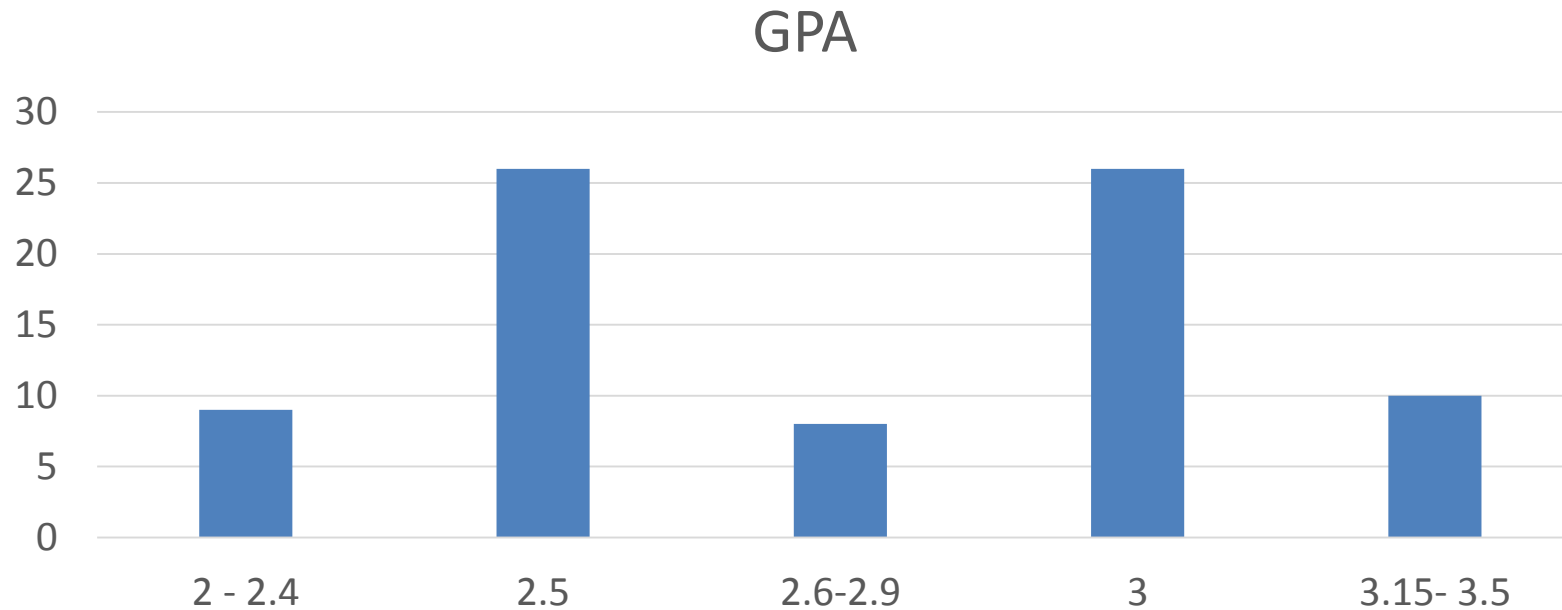
Standardised Tests

Written exams

Interviews

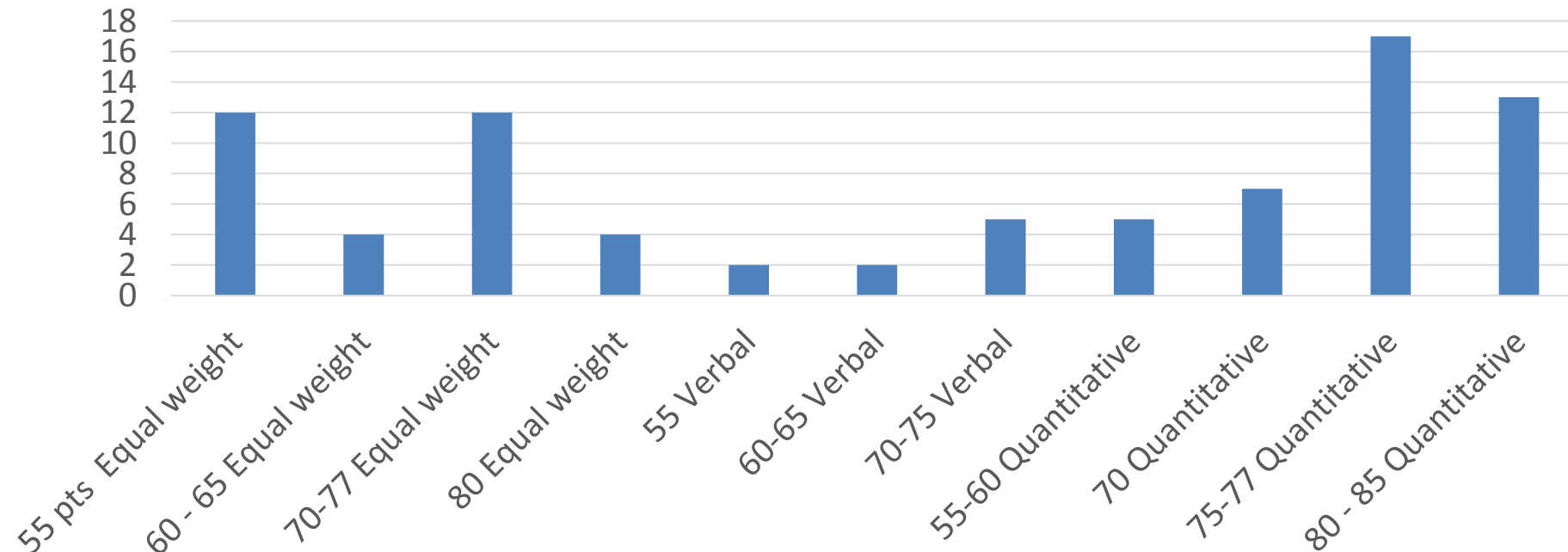
# Standardized Tests for International Student Admissions

## CRITERIA



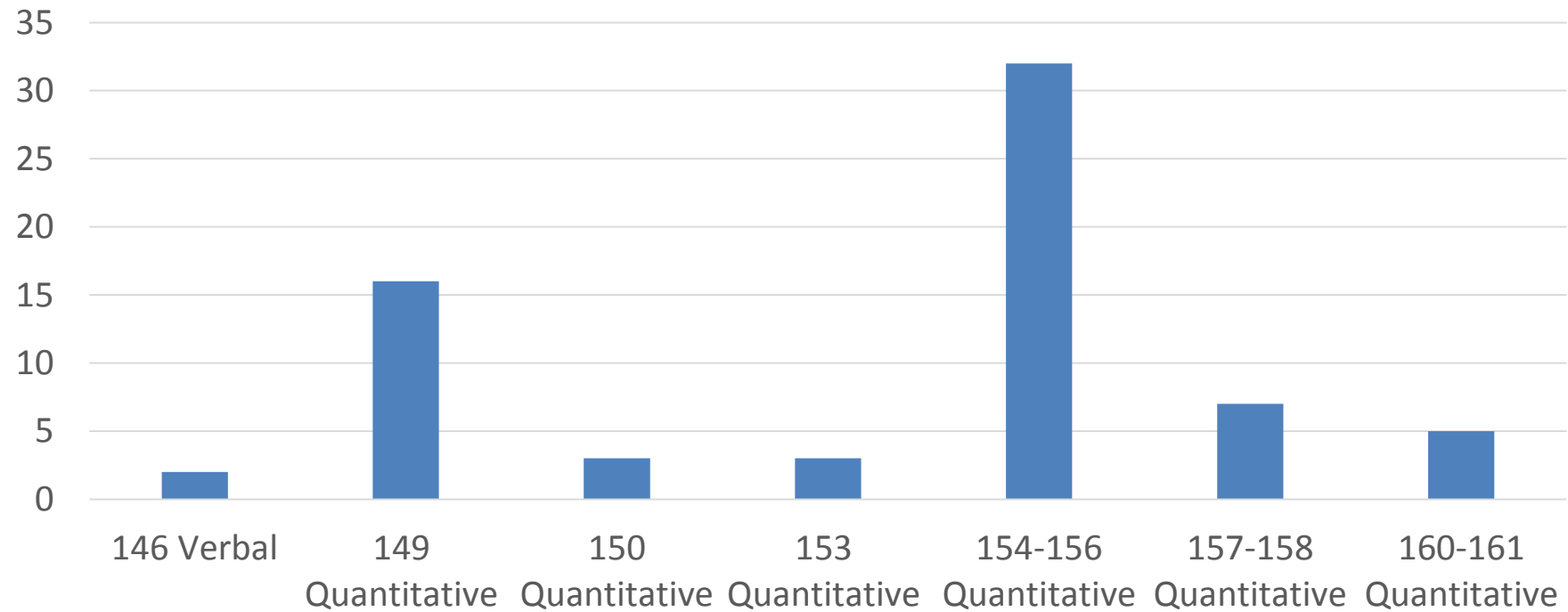
# Standardized Tests for International Student Admissions

ALES N: 79 programs  
minimum scores and versions



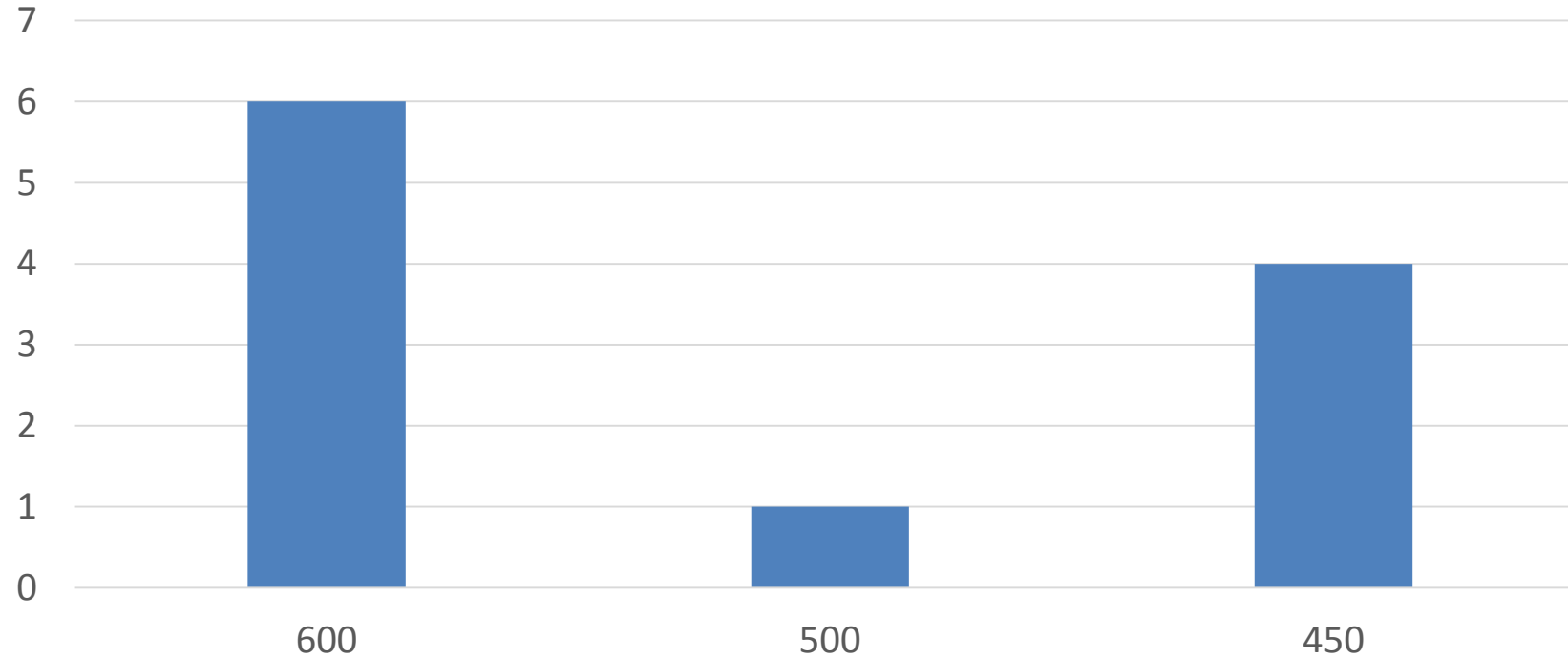
# Standardized Tests for International Student Admissions

GRE N: 79 programs



# Standardized Tests for International Student Admissions

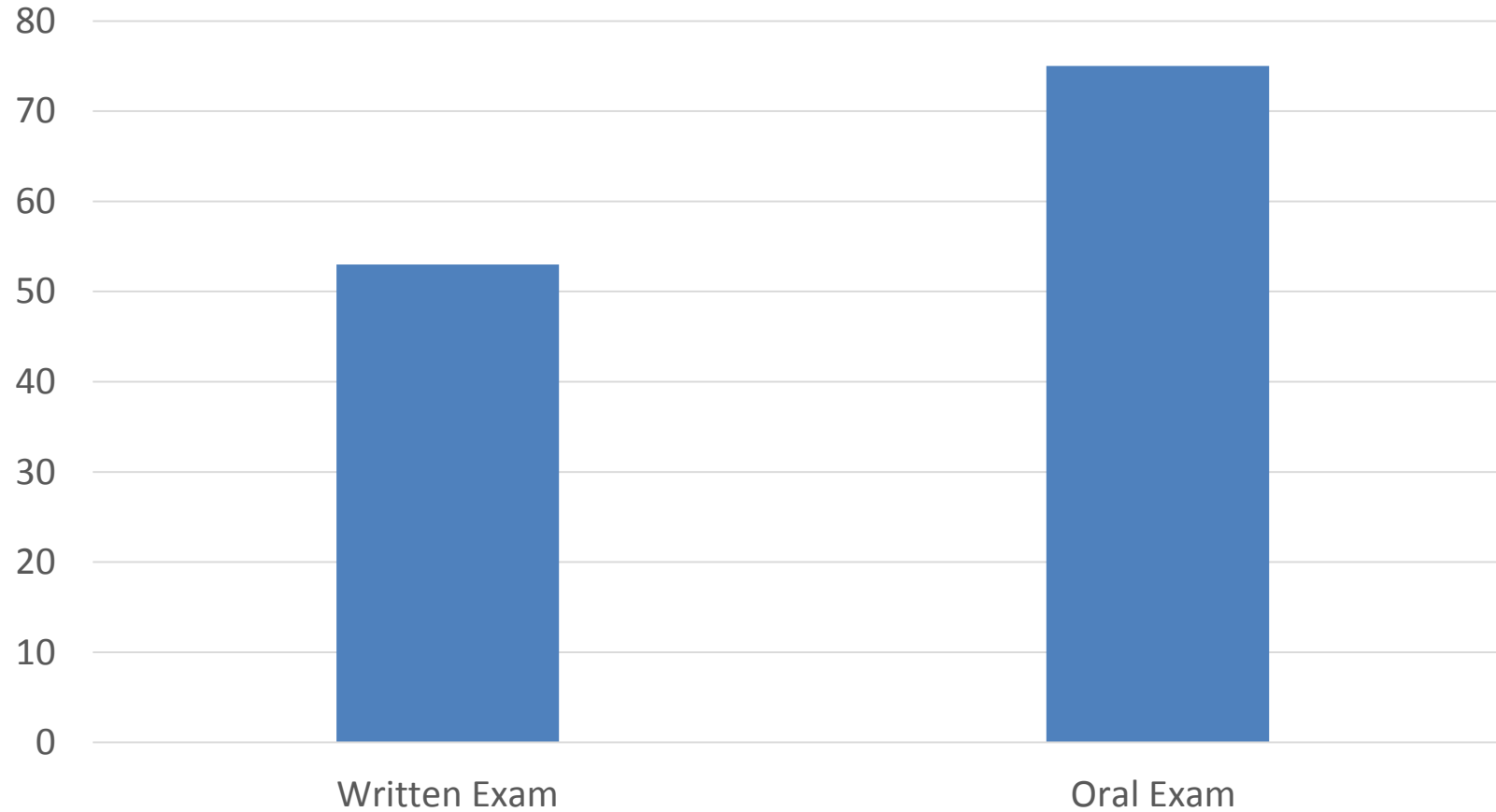
GMAT N: 11 programs



# Standardized Tests for International Student Admissions



All programs N=79





## Standardized Tests for International Student Admissions



Language requirements	TOEFL pb/itp	TWE	TOEFLibt	TWE	IELTS Academic	IELTS WR	BUEPT	YDS
All Master programs	550	4.5	79	22	6.5	6.5	C	NA
All PhD programs	550	4.5	79	22	6.5	6.5	C	NA
FLED	627	4.5	108	24	7	7	B	NA

### Advisors as stake-holders: Perceptions

The admissions process is exactly the same for international applicants as for local students.

Before YÖK' s decree (50% ALES), in general, the most important criterion:

Interview

- Common decision of the committee on the potential of the applicant
- Identification of a research focus

Written exam performance

### Standardised Tests

Test average used as the main criterion

Test average used as the main criterion in combination with other scores

$$0.5 * \text{ALES/GRE} + 0.2 * \text{GPA} + 0.3 * \text{Interview}$$

$$\text{GRE/GMAT} + \text{Written Exam/Interview}$$

Test average used for initial selection

Test average used to confirm the decision

Test average disregarded

### Standardised Tests

#### ALES

measuring quick thinking, learning, similar logic with GRE  
may lack score consistency across versions (not standardised?)

#### GRE

reliable and predictive  
can be too easy for high performing students; no alternatives

#### ALES/GRE

effective in discriminating  
not capable of representing skills necessary for research  
not scaled/equated with each other scientifically

### Language Exams

Language exams such as TOEFL, IELTS and BUEPT reliable and valid but the scores being used may be lower than necessary.  
Students' written ability is below the desired level.

## Standardized Tests for International Student Admissions

---



### GPA

Generally very high GPA; 3.5

However, sometimes non-BU applicants can come with even higher GPAs

### Security, Subjectivity

Interview as a measure against subjectivity, security and fraud  
impression, common decision through experience  
very heavy emphasis on MERITOCRACY

### Complaints

50% ALES should not be forced.

Boğaziçi University cannot receive many overseas applicants as it cannot offer scholarships to overseas students; a handicap



# Standardized Tests for International Student Admissions

---



THANK YOU...

Aylin Ünaldı  
aunaldi@boun.edu.tr